



Administrator's Message:

Dear Midland Families and Community,

As we approach the start of a new year, I want to share how grateful I am for our students, families, staff, and community. Your support and engagement make Midland a strong and welcoming place for all learners. Thank you for the many ways you contribute to our success, including your encouragement, your positivity, and your willingness to work together which truly make a difference. I also encourage all of us to continue being positive promoters of our district. Sharing the good happening in our classrooms, activities, and community strengthens Midland and helps others see the value of being part of the Midland Family.



You may also recall from December's newsletter the article titled "The Impact of Open Enrollment Out and the Power of the Midland Family." It highlighted how open enrollment affects our district and why every student matters. With nearly 120 resident students choosing to attend school elsewhere, we feel both the loss of potential student contributions and the funding that follows them. More importantly, the message reminded us that connection, pride, and belonging matter. Each of us plays a role in strengthening the Midland Family by sharing our success stories and welcoming new families into our community.

As we begin the second half of the school year, I also want to emphasize the importance of consistent student attendance. Regular attendance is one of the strongest predictors of academic success, confidence in learning, and long-term achievement. When students are in school each day, they build stronger relationships, stay connected to learning, and avoid falling behind. We recognize that illnesses and unavoidable circumstances can arise, but your continued partnership in helping students be present and prepared each day makes a tremendous difference.

As a reminder, our second semester is scheduled to begin on January 5, and we look forward to welcoming students and staff back after the break. Please continue to monitor district communications for any weather-related adjustments as winter progresses.

Thank you again for your continued support and partnership. I wish each of you a safe, joyful, and relaxing holiday season. I am excited for all that the new year will bring, and I look forward to starting 2026 together.

Your Partner in Education,

Doug Koerperich, Superintendent

Inside This Issue:

News from the Nest.....	2
Elementary View.....	3
Info for Eagles	4
Counselor/Nurse.....	5
Homework Strategies....	6

NEWS FROM THE NEST At WYOMING



MMHS Semester 1 grades will be stored on January 7 and be available for viewing in the parent/student PowerSchool accounts on January 7

Health Class Helps Others

MHS Health class teamed up with JCCPPC to make 208 bags of laundry detergent for local food pantries. This involved mixing, packaging and giving back together.



Here is the recipe in case anyone is interested:

- 1 - 65 oz Borax Laundry Booster
 - 1 - 55 oz Arm & Hammer Super Washing Soda
 - 1 - 65 oz Arm & Hammer Pure Baking Soda
 - 1 - 17.6 oz Zote Laundry Flakes
 - 1 - 3 lb tub OxiClean Stain Remover
- Use 1-2 Tablespoons per batch.*

FFA Bowling Tournament definitely highlighted all of our students' strengths whether strikes, spares, high score, low score or ability to hit the gutter.

Highest Score - Ryan Baas

Most Strikes - Tie between Dawsyn Heinrich and Sean Christiansen

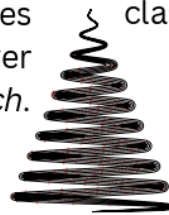
Most Spares - Rodney Nissen



Touring KCRG



Midland's Current Issues class recently toured the KCRG-TV9 studios and spent time with evening anchor Jim Mertens. He walked students through how news stories are developed and the many factors that shape a broadcast. They also visited the programming room, where KCRG manages several broadcast booths. Each student had the chance to share a brief overview of their semester project with Mr. Mertens, who offered helpful ideas to make their work more personal. It was a great opportunity to see how a simple headline in class connects to the deeper process of creating news and stories.



Holiday Sounds



Mrs. Lamphier and four of her high school band students went to Jones Regional Medical Center in Anamosa to provide some sounds of the season. The hospital said "Their performance brought joy to our patients, visitors, and team members!"



Eaglet's Elementary



The Christmas Pickle, a legend from Germany

Christmas Around the World

1st Graders learn about Christmas around the world. They listen to stories, practice reading, writing, coloring and cutting skills to make a hands-on project. They also have a snack related to each country they learn about. Here



UPCOMING SCHEDULES...

Dec 22-Jan 2 - NO SCHOOL

Jan 7, 14, 28 - 2 Hour Early Out

Jan 19 - No School **OR**
Snow Makeup Day

(see article on page 4 for more info)



Angel Books



Thanks to the Friends of the Wyoming Public Library and to all who donated to their Angel Books program. Each elementary student got to take home a book for the holidays!



4-6 HOLIDAY CONCERT



K-3 Concert is Dec 18 - 1:15 or 6PM in Wyoming



SCHOOL CALENDAR AND INCLEMENT WEATHER



This is a brief overview of our school calendar and weather delay planning. The district is required to meet 1080 student contact hours; our calendar currently includes 1096 hours, giving us a cushion of about 2.5 days.

Here is the current plan at Midland should we have any issues:

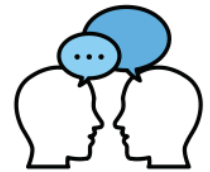
- If a day is canceled before January 9, we will use the scheduled make-up day on January 19.
- After January 9, if a cancellation can be anticipated, we will implement a virtual learning day (used sparingly-ideally no more than two, with a maximum of five total).
- Any additional days beyond our cushion would require adding days to the end of the school year or potentially extending the length of the school day.

What happens if a delay occurs on a day that is already scheduled as a two hour early release?

- If we have a two-hour delay on a day already scheduled for a two-hour early release (such as a Wednesday), we will cancel the early release for that day. An exception would be days immediately before an extended break, as many of you may already have travel or family plans.



You are cordially invited to Community Conversation



Each month before the regularly scheduled school board meeting all Midland community members are invited to attend **Community Conversation**. The Superintendent and 1-2 school board members will host this open conversation opportunity from 5-5:40pm in the board room.

This opportunity is to allow anyone to come and ask questions or initiate a conversation around something that may be of interest to you regarding the school.

The next one will be held on **Wednesday, January 14 at 5PM** in the board room of the District Office (*in the old daycare building in Wyoming*). **Please join us!**

Open Enrollment

Open Enrollment may allow parents/guardians to enroll their child(ren) into another Iowa school district under the terms and conditions of Iowa Code 282.18 and Iowa Administrative Code 281-17.

Deadline to file is March 1st.



Winter Break Info:

School dismisses regularly on Friday, December 19

Friday, Jan. 2 is a full Staff Inservice Day — NO SCHOOL

School resumes Mon, Jan 5



Counselor's Corner



SENIORS: Scholarship season is kicking into high gear! Be sure to check the scholarship webpage and watch ParentSquare for potential scholarships that we have received. Be sure to give your references plenty of time to write good letters of recommendation and give them plenty of information about yourself including all activities you are involved in, any work experience, all volunteer info, most importantly **WATCH THOSE DEADLINES!!!** Show the HS office any letters or emails you receive showing you've been awarded a scholarship so you can be acknowledged at graduation!

Computer Science Week



Midland celebrated Computer Science Education Week this month! From learning the basics of computer science in elementary school to coding and programming Finch robots in middle school, our students build strong skills step by step. By high school, they're exploring opportunities for careers in engineering, computer science, and emerging technologies, building real-world skills that prepare them for whatever path they choose next. Our teachers are committed to this journey too. Thanks to a grant received last year, Midland teachers received summer training on using a variety of fun, kid-friendly computer science tools, and the results have been amazing! We're excited to keep expanding computer science opportunities for all Midland students.

I NEED TO STAY HOME IF...

From the Nurse's Office

I have a fever	I am vomiting	I have diarrhea	I have a new rash	I have head lice	I have an eye infection	I have been in the hospital
Temperature of 100.4 degrees F or higher	Within the past 24 hours	Within the past 24 hours	Body rash with itching or fever	Itchy head, active head lice	Redness, itching, and/or pus draining from eye	Hospital stay and/or emergency room visit



**** A student with head lice can no longer be excluded from school BUT it is highly recommended that the lice is treated properly before the student returns to school. ****

I am ready to go back to school when I am...

Fever free for 24 hours WITHOUT the assistance of medication	Free from vomiting for 24 hours.	Free from diarrhea for 24 hours.	Rash is improving, itching is controlled and fever free x 24 hours.	Treated with appropriate lice treatment at home.	Free from drainage and/or have been evaluated by my doctor if needed.	Released by my medical provider to return to school.
(Tylenol, Ibuprofen, Advil, or other cold/cough medicine containing tylenol etc)			I have been evaluated by my doctor if needed/if the rash is new.		Able to keep hands away from eyes (not frequently rubbing/itching eyes)	The school has been given a doctor's note/release.

If your child has strep throat or another bacterial infection, he/she should stay home until the antibiotic has been given for at least 24 hours and your health care provider has given permission for your child to return to school. We encourage you to seek medical attention when your child is sick and to follow your health care provider's recommendations about returning to school and activities.

Homework Strategies That Work

Completing Homework on Time Contributes to School Success

Homework reinforces skills learned in the classroom and provides additional practice. It allows students to be responsible and work independently. Homework maintains a link between home and school by engaging children to talk about what they are learning, while providing parents with an opportunity to see how their students are progressing. The following study tips can help students succeed in the classroom.

Top 10 Tips for Studying

1. Don't leave revision until the last moment before an exam. It's best to look over your notes every day. The more you see it, the more you remember!!
2. Have a separate place for studying and another for relaxing.
3. Make sure that it is a quiet place to study.
4. Don't procrastinate. Get down to studying as soon as possible. The longer you put it off, the later you will get to bed.
5. Make sure that you have all the books that you need.
6. Read through what you need to learn.
7. Make notes on the key points.
8. Take short regular study breaks.
9. Ask yourself the sort of questions that might be in the exam.
10. Get to bed at a sensible time and sleep well!!



Happy
Holidays

Vision Statement

The vision of the Midland School District is to prepare students to think, lead and serve.